



# Workbook

**Workplace hazard awareness course:  
student workbook**

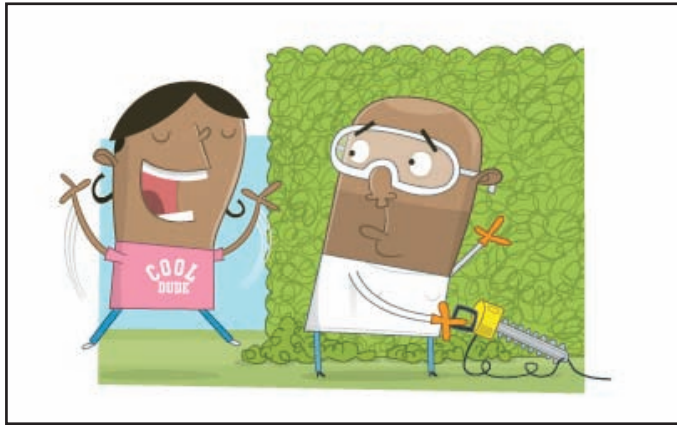
## Section 2

### Hazards and harm A



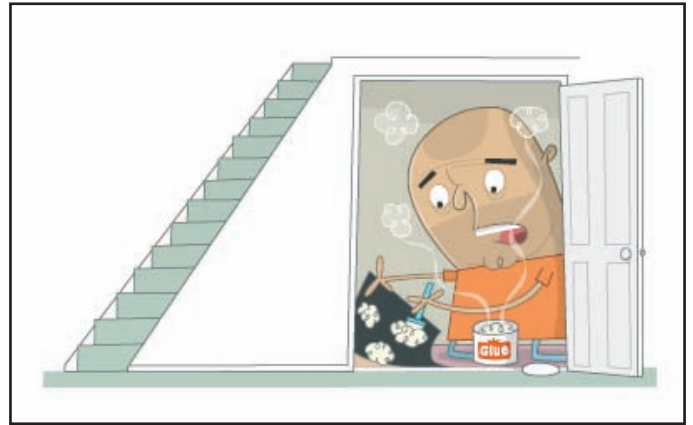
Can you guess what's about to happen?

Jason is trimming a hedge. He hears a voice and turns round to see who it is.



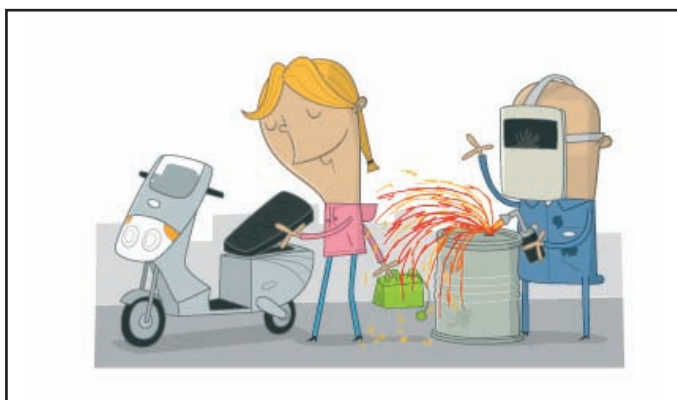
Answer:

Ali is laying carpet tiles inside a cupboard under some stairs. He takes the can of carpet glue inside the cupboard with him because it's easier than having to go in and out all the time.



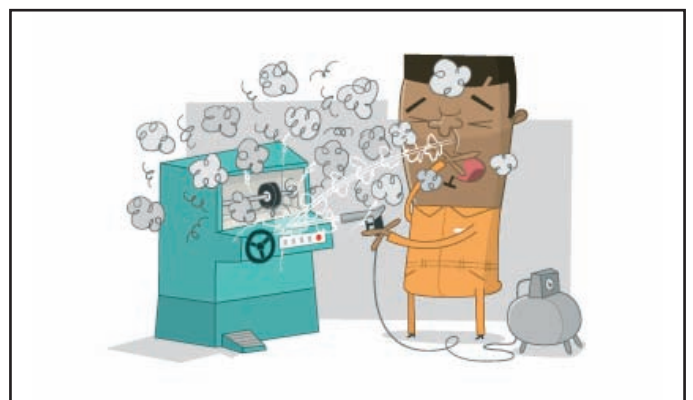
Answer:

Tanya is helping out at her local garage. She's just opened a petrol can and is about to fill her tank when her friend starts welding. A spark then falls into the can.



Answer:

John is asked by his boss to clean dust from a machine. He's never cleaned the machine before and doesn't know it's wrong to use compressed air. So, he doesn't bother to put on his safety glasses or face mask.



Answer:

**Health and safety protects and saves lives**

# Section 3

## Hazards and harm B



Here's your chance to see how good you are at spotting work hazards



•
•
•
•
•
•
•



- 
- 
- 
- 
- 
- 
- 
- 

***Make sure you're trained for the job you do***



•
•
•
•
•
•
•
•

## Section 4

### Safety signs



Can you match each description to a sign?

**A** Can easily be set on fire

**B** Meet here after you've escaped the fire

**C** You could get an electric shock

**D** You must wear ear protection

**E** This may blow up

**F** You must wear a hard hat

**G** Dangerous poison

**H** Don't ride on forklift trucks













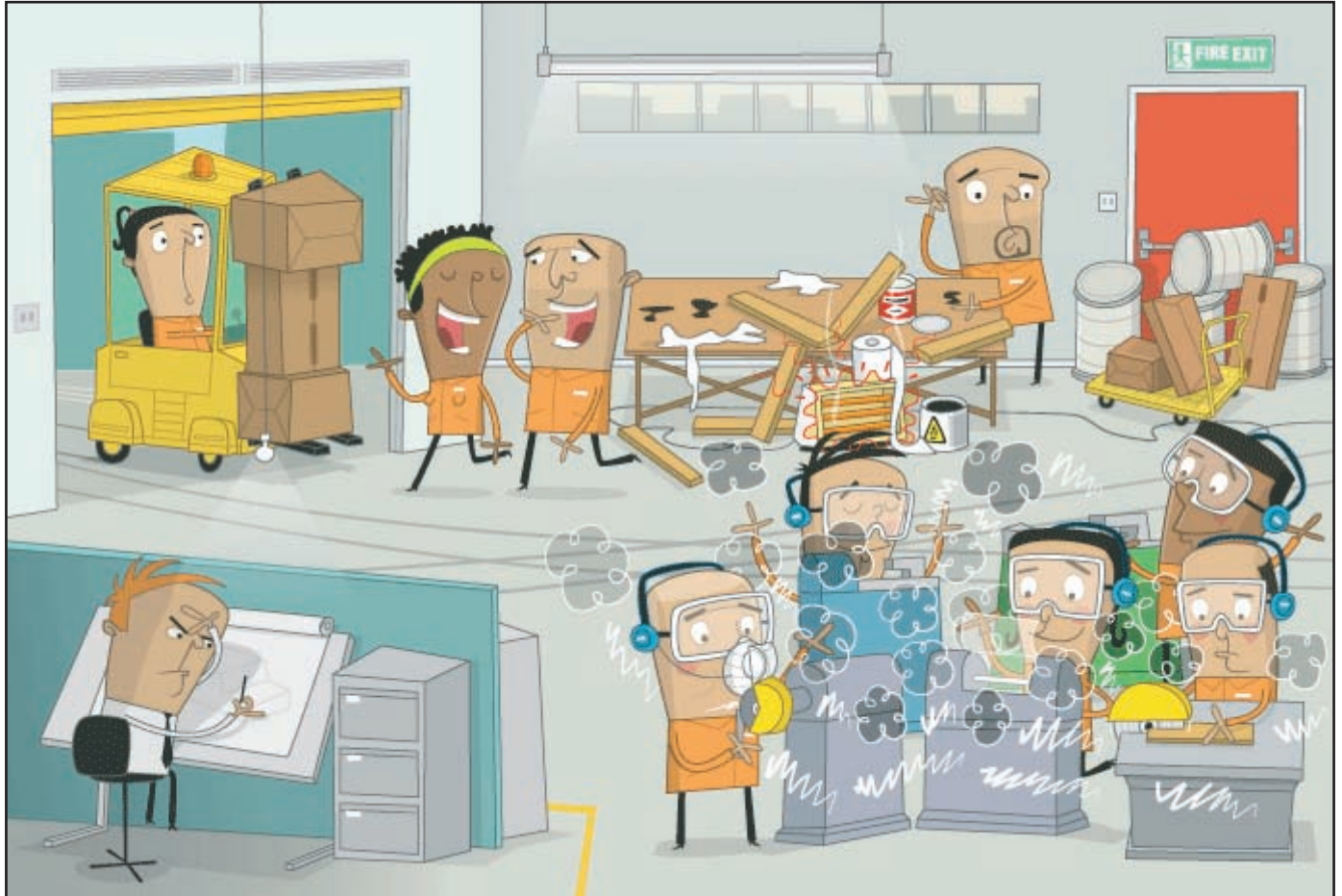




## Section 5 Hazardous working conditions



See how good you are at spotting hazards caused by bad working conditions!



•
•
•
•
•
•
•
•



## Take a tour

Hazard	What could go wrong?	How could you make it safe?
<i>Heavy boxes piled up in front of the fire door</i>	<i>If there's a fire, people trying to escape wouldn't be able to get through</i>	<i>Make sure all fire exits are kept clear – and checked regularly</i>

***If you think something's unsafe at work, speak to your manager***



## Section 6 Protection



Can you match the noise levels  
to the sounds?

<b>A</b>	50–60	<input type="checkbox"/>	A busy street
<b>B</b>	78–85	<input type="checkbox"/>	A loud MP3 player
<b>C</b>	85–95	<input type="checkbox"/>	A chainsaw
<b>D</b>	95–100	<input type="checkbox"/>	Normal conversation
<b>E</b>	90–115	<input type="checkbox"/>	A jet aircraft taking off 25 metres away
<b>F</b>	115–120	<input type="checkbox"/>	A power drill
<b>G</b>	140+	<input type="checkbox"/>	A heavy lorry about 7 metres away